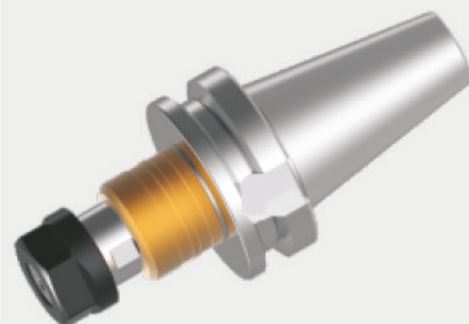


JIS B 6339 (MAS 403 BT) Tool holder

HYDRAULIC EXPANSIONS CHUCK	32
SHRINK FIT CHUCK	35
ER COLLET CHUCK	37
ER SLIM COLLET CHUCK	39
INTEGRAL DRILL CHUCK HOLDER	39
POWER MILLING CHUCK	40
MICRO-COMPENSATION TAPPING CHUCK	41
SIDE LOCK HOLDER	42
2° SIDE LOCK HOLDER	42
SHELL END MILL ARBOR	43
FACE MILLING CUTTER HOLDER	44
SLOTING CUTTER HOLDER	44



TAPER SHANK INTERFACE JIS B6339 (MAS 403 BT) -FORMS AND FEATURES

FEATURES:

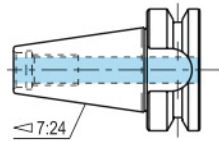
- Used for NC machines and machining center.
- Extremely high tool quality protects the machine spindle and extends the life time of the tools.
- Material : Special alloy steel for high stressed components,
- Surface hardness:58~62HRC
- Tensile strength in the core at least 950 N/mm²
- Accuracy : Cone angle according norm
- Surface roughness of cone max. Ra 0,3

Form A: without through hole.

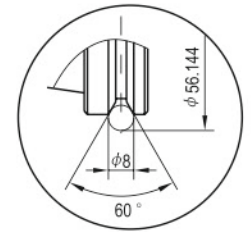
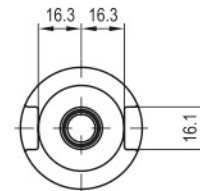
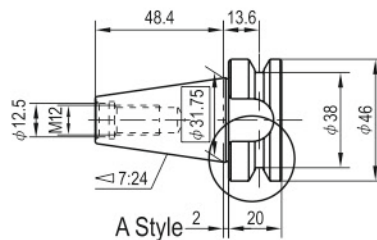
Form AD:with through hole for central coolant feed.

Form AD/B:for lateral coolant feed via the tool collar.

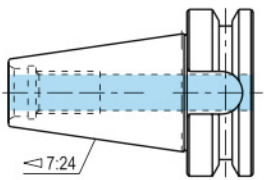
BT30 JIS B 6339 (MAS 403 BT)



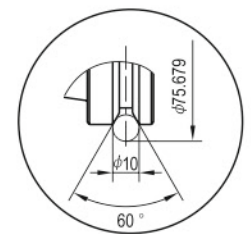
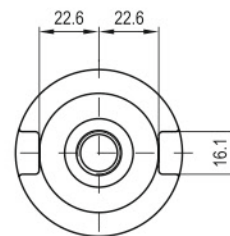
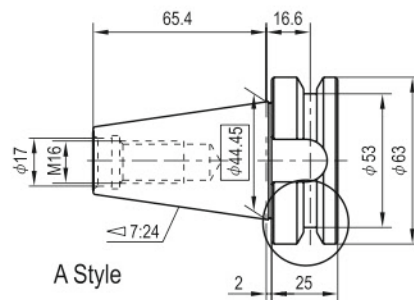
AD Style



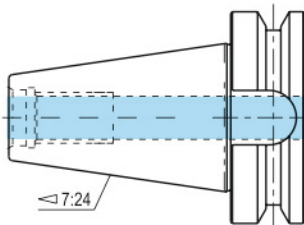
BT40 JIS B 6339 (MAS 403 BT)



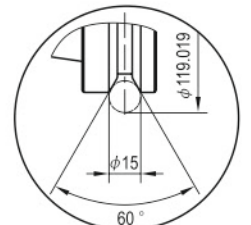
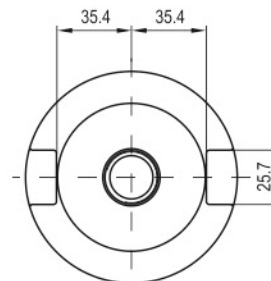
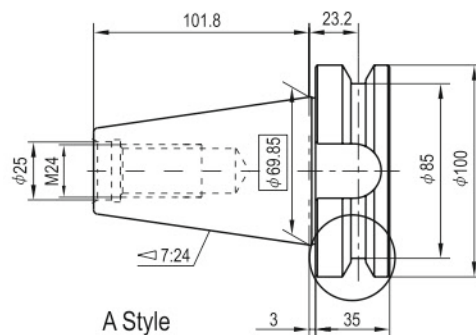
AD Style



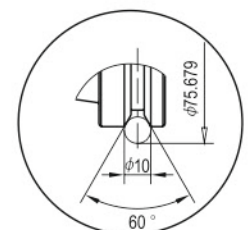
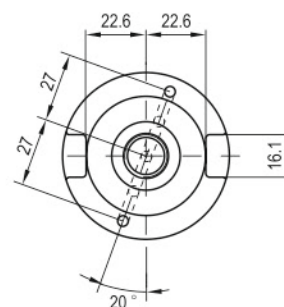
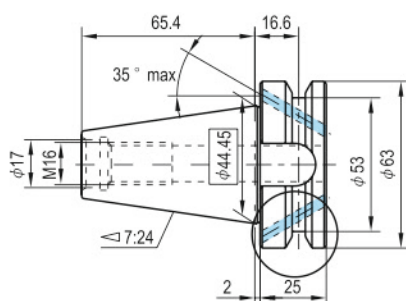
BT50 JIS B 6339 (MAS 403 BT)



AD Style

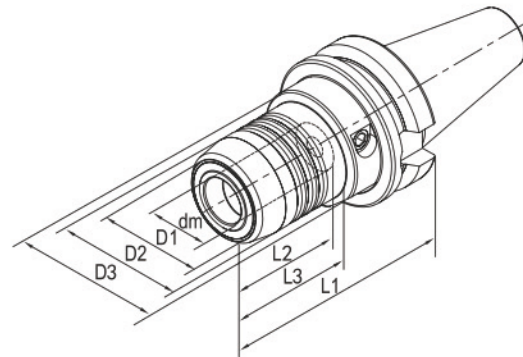
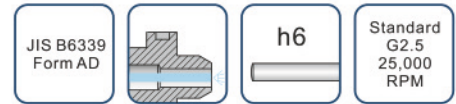


AD/B Style



HYDRAULIC EXPANSIONS CHUCK

- Super transmitted torque for high clamping reliability.
- Radial run-out less than 3μ (system accuracy at 4x μ)
- For clamping cutting tools with cylinderic shank tolerance h6
- Flexible clamping range due to use of reducing sleeve for Various shank.
- Axial length adjustment available and max. adjustment travel 10mm.
- Ideal damping characteristics, resulting in optimum surface finish, increase cutter life time and spindle protection.

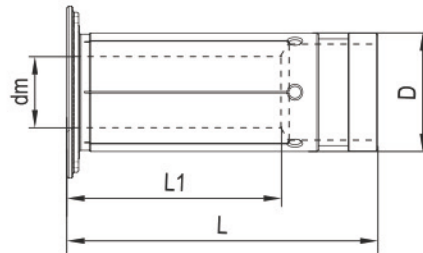


Order No.	Model	Shank	Size(mm)							Screw	Screw wrench	for Collets
			dm	D1	D2	D3	L1	L2	L3			
122-01-301	BT30-HCM06-50.8	BT30-AD	6	23	26	46	50.8	37	18	HCS005014C	TS5	-
122-01-302	BT30-HCM08-50.8	BT30-AD	8	25	28	46	50.8	37	18.5	HCS006014C	TS5	-
122-01-303	BT30-HCM10-50.8	BT30-AD	10	27	30	46	50.8	41	19	HCS008014C	TS5	-
122-01-304	BT30-HCM12-50.8	BT30-AD	12	29	32	46	50.8	46	19.5	HCS008014C	TS5	HC12
122-01-305	BT30-HCM16-90	BT30-AD	16	35	38	45	90	49	50	HCS008014C	TS5	-
122-01-306	BT30-HCM20-90	BT30-AD	20	37.5	42	45	90	51	50	HCS008014C	TS5	HC20
122-01-401	BT40-HCM06-90	BT40-AD	6	22	26	50	90	37	43	HCS005014C	TS5	-
122-01-402	BT40-HCM08-90	BT40-AD	8	24	28	50	90	37	44.5	HCS006014C	TS5	-
122-01-403	BT40-HCM10-90	BT40-AD	10	26	30	50	90	41	44.5	HCS008014C	TS5	-
122-01-404	BT40-HCM12-90	BT40-AD	12	28	32	50	90	46	44.5	HCS008014C	TS5	HC12
122-01-405	BT40-HCM16-90	BT40-AD	16	34	38	50	90	49	47.5	HCS008014C	TS5	-
122-01-406	BT40-HCM20-90	BT40-AD	20	38	42	50	90	51	47.5	HCS008014C	TS5	HC20
122-01-407	BT40-HCM25-83	BT40-AD	25	53	57	72	83	57	25.5	HCS012014C	TS6	-
122-01-408	BT40-HCM32-83	BT40-AD	32	60	63	80	83	61	25.5	HCS012014C	TS6	HC32
122-01-409	BT40-HCM14-90	BT40-AD	14	30	34	50	90	46	44.5	HCS008014C	TS5	-
122-01-410	BT40-HCM18-90	BT40-AD	18	36	40	50	90	49	47.5	HCS008014C	TS5	-
122-01-411	BT40-HCM06-150	BT40-AD	6	22	26	50	150	37	103	HCS005014C	TS5	-
122-01-412	BT40-HCM08-150	BT40-AD	8	24	28	50	150	37	104	HCS006014C	TS5	-
122-01-413	BT40-HCM10-150	BT40-AD	10	26	30	50	150	41	104	HCS008014C	TS5	-
122-01-414	BT40-HCM12-150	BT40-AD	12	28	32	50	150	46	105	HCS008014C	TS5	HC12
122-01-415	BT40-HCM14-150	BT40-AD	14	30	34	50	150	46	105	HCS008014C	TS5	-
122-01-416	BT40-HCM16-150	BT40-AD	16	34	38	50	150	49	106	HCS008014C	TS5	-
122-01-417	BT40-HCM18-150	BT40-AD	18	36	40	50	150	49	107	HCS008014C	TS5	-
122-01-418	BT40-HCM20-150	BT40-AD	20	38	42	50	150	51	107	HCS008014C	TS5	HC20
122-01-419	BT40-HCM06-200	BT40-AD	6	22	26	50	200	37	153	HCS005014C	TS5	-
122-01-420	BT40-HCM08-200	BT40-AD	8	24	28	50	200	37	154	HCS006014C	TS5	-
122-01-421	BT40-HCM10-200	BT40-AD	10	26	30	50	200	41	154	HCS008014C	TS5	-
122-01-422	BT40-HCM12-200	BT40-AD	12	28	32	50	200	46	155	HCS008014C	TS5	HC12
122-01-423	BT40-HCM14-200	BT40-AD	14	30	34	50	200	46	155	HCS008014C	TS5	-
122-01-424	BT40-HCM16-200	BT40-AD	16	34	38	50	200	49	156	HCS008014C	TS5	-
122-01-425	BT40-HCM18-200	BT40-AD	18	36	40	50	200	49	157	HCS008014C	TS5	-
122-01-426	BT40-HCM20-200	BT40-AD	20	38	42	50	200	51	157	HCS008014C	TS5	HC20
122-01-501	BT50-HCM06-90	BT50-AD	6	22	26	44.5	90	37	29.5	HCS005014C	TS5	-
122-01-502	BT50-HCM08-90	BT50-AD	8	24	28	44.5	90	37	30	HCS006014C	TS5	-
122-01-503	BT50-HCM10-90	BT50-AD	10	26	30	44.5	90	41	31	HCS008014C	TS5	-
122-01-504	BT50-HCM12-90	BT50-AD	12	28	32	44.5	90	46	34	HCS008014C	TS5	HC12
122-01-505	BT50-HCM16-90	BT50-AD	16	34	38	44.5	90	49	34	HCS008014C	TS5	-
122-01-506	BT50-HCM20-90	BT50-AD	20	38	42	44.5	90	51	34	HCS008014C	TS5	HC20
122-01-507	BT50-HCM25-90	BT50-AD	25	53	57	66	90	57	34	HCS012014C	TS6	-
122-01-508	BT50-HCM32-90	BT50-AD	32	60	64	72	90	61	34	HCS012014C	TS6	HC32
122-01-509	BT50-HCM12-150	BT50-AD	12	28	32	50	150	46	95	HCS008014C	TS5	HC12
122-01-510	BT50-HCM20-150	BT50-AD	20	38	42	50	150	51	95	HCS008014C	TS5	HC20

REDUCING SLEEVE FOR HYDRAULIC EXPANSIONS CHUCK

h6

- Radial run-out less than 5 μ .
- For clamping cutting tools with cylinderic shank tolerance h6.



Order No.	Model	Size (mm)			
		dm	D	L1	L
100-01-001	HC12-3	3	12	16.5	47.5
100-01-002	HC12-4	4	12	16.5	47.5
100-01-003	HC12-5	5	12	16.5	47.5
100-01-004	HC12-6	6	12	24	47.5
100-01-005	HC12-8	8	12	25.5	47.5
100-01-006	HC20-3	3	20	17.5	52.5
100-01-007	HC20-4	4	20	17.5	52.5
100-01-008	HC20-5	5	20	17.5	52.5
100-01-009	HC20-6	6	20	25.5	52.5
100-01-010	HC20-7	7	20	28	52.5
100-01-011	HC20-8	8	20	28	52.5
100-01-012	HC20-9	9	20	32.5	52.5
100-01-013	HC20-10	10	20	32.5	52.5
100-01-014	HC20-11	11	20	36	52.5
100-01-015	HC20-12	12	20	36	52.5
100-01-016	HC20-13	13	20	36.5	52.5
100-01-017	HC20-14	14	20	37	52.5
100-01-018	HC20-15	15	20	37	52.5
100-01-019	HC20-16	16	20	37.5	52.5
100-01-020	HC32-6	6	32	25.5	63.5
100-01-021	HC32-8	8	32	27.5	63.5
100-01-022	HC32-10	10	32	30.5	63.5
100-01-023	HC32-12	12	32	30.5	63.5
100-01-024	HC32-14	14	32	32.5	63.5
100-01-025	HC32-16	16	32	40.5	63.5
100-01-026	HC32-18	18	32	40.5	63.5
100-01-027	HC32-20	20	32	40.5	63.5
100-01-028	HC32-25	25	32	48.5	63.5

HYDRAULIC EXPANSIONS CHUCK SET

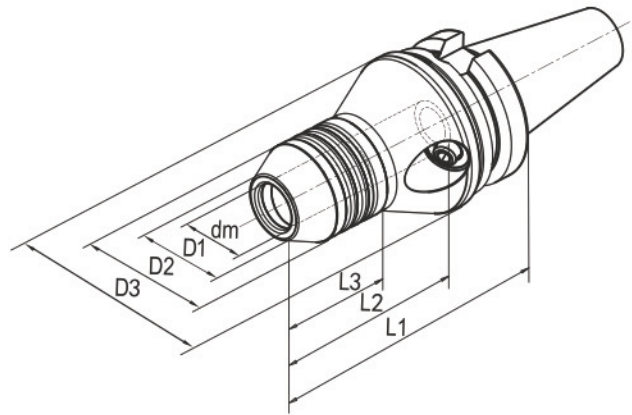
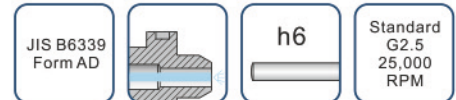
- each set including 1pc each of BT40-HCM20-90 hydraulic expansion chuck,HC20-6,HC20-8,HC20-10,HC20-12,HC20-16 (internal dia:6,8,10,12,16mm) reducing sleeve and screw wrench,pack in strong aluminium box.



ORDER NO.122-01-S04

PRECISION HYDRAULIC EXPANSIONS CHUCK

- Used on CNC tool grinding machine for grinding/sharpening of drill, reamer, end mill etc.
- High precision and Radial Run-out not more than 2μ at 4d checking point.
- Super transmitted torque for high clamping reliability.
- For clamping cylindric shank tolerance h6
- Can be operated frequently long time and keep good repeatability.



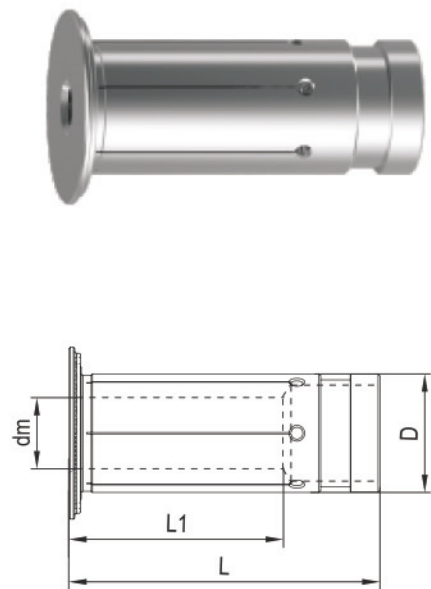
Order No.	Modle	Shank	Size(mm)							Wrench	for Collets
			dm	D1	D2	D3	L1	L2	L3		
122-01-001	BT40-HCM12-110M	BT40-AD	12	21.5	36.5	60	110	80	47	TS5	HC12..M
122-01-002	BT40-HCM20-110M	BT40-AD	20	28	42	67	110	85	47	TS5	HC20..M

PRECISION REDUCING SLEEVE FOR HYDRAULIC CHUCK

- Radial run-out less than 3μ .
- Used for grinding/sharpening of drill, reamer, end mill etc.
- For clamping cutting tools with cylindric shank tolerance h6

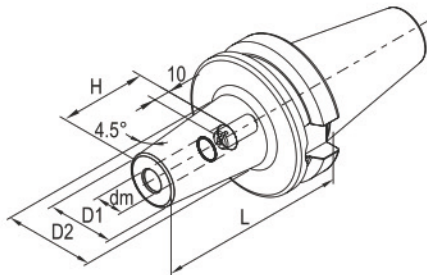
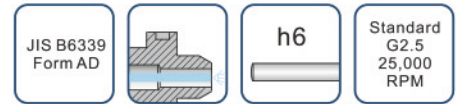


Order No.	Modle	Size (mm)			
		dm	D	L1	L
100-01-101	HC12-3M	3	12	16.5	47.5
100-01-102	HC12-4M	4	12	16.5	47.5
100-01-103	HC12-5M	5	12	16.5	47.5
100-01-104	HC12-6M	6	12	24	47.5
100-01-105	HC12-8M	8	12	25.5	47.5
100-01-106	HC20-3M	3	20	17.5	52.5
100-01-107	HC20-4M	4	20	17.5	52.5
100-01-108	HC20-5M	5	20	17.5	52.5
100-01-109	HC20-6M	6	20	25.5	52.5
100-01-110	HC20-7M	7	20	28	52.5
100-01-111	HC20-8M	8	20	28	52.5
100-01-112	HC20-9M	9	20	32.5	52.5
100-01-113	HC20-10M	10	20	32.5	52.5
100-01-114	HC20-11M	11	20	36	52.5
100-01-115	HC20-12M	12	20	36	52.5
100-01-116	HC20-13M	13	20	36.5	52.5
100-01-117	HC20-14M	14	20	37	52.5
100-01-118	HC20-15M	15	20	37	52.5
100-01-119	HC20-16M	16	20	37.5	52.5
100-01-120	HC32-6M	6	32	25.5	63.5
100-01-121	HC32-8M	8	32	27.5	63.5
100-01-122	HC32-10M	10	32	30.5	63.5
100-01-123	HC32-12M	12	32	30.5	63.5
100-01-124	HC32-14M	14	32	32.5	63.5
100-01-125	HC32-16M	16	32	40.5	63.5
100-01-126	HC32-18M	18	32	40.5	63.5
100-01-127	HC32-20M	20	32	40.5	63.5
100-01-128	HC32-25M	25	32	48.5	63.5



SHRINK FIT CHUCK

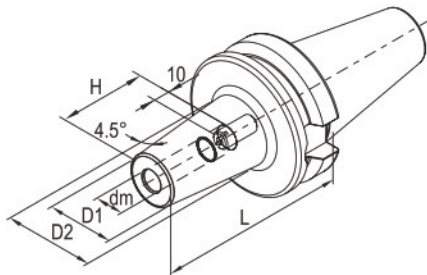
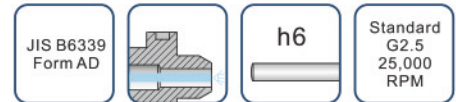
- Made of high-temperature steel and fit for High frequency heating machine.
- For clamping cutting tools with cylinderic shank tolerance h6
- High tool-gripping strength and machining accuracy
- 360 degree concentric clamping without set screws, collets.
- Engineered to produce the high degree of balance available
- With indicating line for shank depth of cutter.



Order No.	Model	Shank	Size(mm)					Screw
			dm	D1	D2	L	H	
122-02-301	BT30-SFX03-60	BT30-AD	3	10	-	60	10	-
122-02-302	BT30-SFX04-60	BT30-AD	4	10	-	60	12	-
122-02-303	BT30-SFX05-60	BT30-AD	5	10	-	60	15	-
122-02-304	BT30-SFX06-80	BT30-AD	6	21	27	80	36	S005014C
122-02-305	BT30-SFX06-105	BT30-AD	6	21	27	105	36	S005014C
122-02-306	BT30-SFX06-120	BT30-AD	6	21	27	120	36	S005014C
122-02-307	BT30-SF08-80	BT30-AD	8	21	27	80	36	S006014C
122-02-308	BT30-SF08-105	BT30-AD	8	21	27	105	36	S006014C
122-02-309	BT30-SF08-120	BT30-AD	8	21	32	120	36	S006014C
122-02-310	BT30-SF10-80	BT30-AD	10	24	32	80	42	S008014C
122-02-311	BT30-SF10-105	BT30-AD	10	24	32	105	42	S008014C
122-02-312	BT30-SF10-120	BT30-AD	10	24	32	120	42	S008014C
122-02-313	BT30-SF12-80	BT30-AD	12	24	32	80	47	S008014C
122-02-314	BT30-SF12-105	BT30-AD	12	24	32	105	47	S008014C
122-02-315	BT30-SF12-120	BT30-AD	12	24	34	120	47	S008014C
122-02-316	BT30-SF14-80	BT30-AD	14	27	34	80	47	S008014C
122-02-317	BT30-SF14-105	BT30-AD	14	27	34	105	47	S008014C
122-02-318	BT30-SF14-120	BT30-AD	14	27	34	120	47	S008014C
122-02-319	BT30-SF16-80	BT30-AD	16	27	34	80	50	S012014C
122-02-320	BT30-SF16-105	BT30-AD	16	27	34	105	50	S012014C
122-02-321	BT30-SF16-120	BT30-AD	16	27	34	120	50	S012014C
122-02-401	BT40-SFX03-80	BT40-AD	3	10	-	80	10	-
122-02-402	BT40-SFX04-80	BT40-AD	4	10	-	80	12	-
122-02-403	BT40-SFX05-80	BT40-AD	5	10	-	80	15	-
122-02-404	BT40-SFX06-90	BT40-AD	6	21	27	90	36	S005014C
122-02-405	BT40-SFX06-120	BT40-AD	6	21	27	120	36	S005014C
122-02-406	BT40-SFX06-160	BT40-AD	6	21	32	160	36	S005014C
122-02-407	BT40-SF08-90	BT40-AD	8	21	27	90	36	S006014C
122-02-408	BT40-SF08-120	BT40-AD	8	21	27	120	36	S006014C
122-02-409	BT40-SF08-160	BT40-AD	8	21	32	160	36	S006014C
122-02-410	BT40-SF10-90	BT40-AD	10	24	32	90	42	S008014C
122-02-411	BT40-SF10-120	BT40-AD	10	24	32	120	42	S008014C
122-02-412	BT40-SF10-160	BT40-AD	10	24	34	160	42	S008014C
122-02-413	BT40-SF12-90	BT40-AD	12	24	32	90	47	S008014C
122-02-414	BT40-SF12-120	BT40-AD	12	24	32	120	47	S008014C
122-02-415	BT40-SF12-160	BT40-AD	12	24	34	160	47	S008014C
122-02-416	BT40-SF14-90	BT40-AD	14	27	34	90	47	S008014C
122-02-417	BT40-SF14-120	BT40-AD	14	27	34	120	47	S008014C
122-02-418	BT40-SF14-160	BT40-AD	14	27	42	160	47	S008014C
122-02-419	BT40-SF16-90	BT40-AD	16	27	34	90	50	S012014C
122-02-420	BT40-SF16-120	BT40-AD	16	27	34	120	50	S012014C
122-02-421	BT40-SF16-160	BT40-AD	16	27	42	160	50	S012014C
122-02-422	BT40-SF18-90	BT40-AD	18	33	42	90	50	S012014C
122-02-423	BT40-SF18-120	BT40-AD	18	33	42	120	50	S012014C
122-02-424	BT40-SF18-160	BT40-AD	18	33	51	160	50	S012014C
122-02-425	BT40-SF20-90	BT40-AD	20	33	42	90	52	S016016C
122-02-426	BT40-SF20-120	BT40-AD	20	33	42	120	52	S016016C
122-02-427	BT40-SF20-160	BT40-AD	20	33	51	160	52	S016016C
122-02-428	BT40-SF25-100	BT40-AD	25	44	53	100	58	S016016C
122-02-429	BT40-SF25-120	BT40-AD	25	44	53	120	58	S016016C
122-02-430	BT40-SF25-160	BT40-AD	25	44	60	160	58	S016016C

SHRINK FIT CHUCK

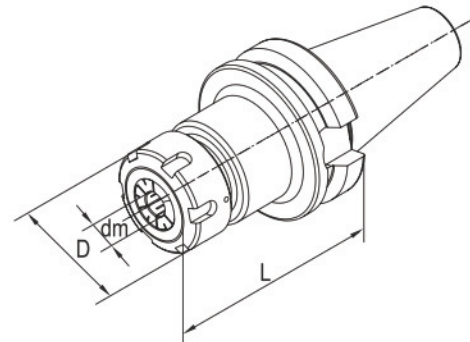
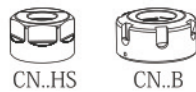
- Made of high-temperature steel and fit for High frequency heating machine.
- For clamping cutting tools with cylinderic shank tolerance h6
- High tool-gripping strength and machining accuracy
- 360 degree concentric clamping without set screws, collets.
- Engineered to produce the high degree of balance available
- With indicating line for shank depth of cutter.



Order No.	Model	Shank	Size(mm)					Screw
			dm	D1	D2	L	H	
122-02-501	BT50-SFX06-100	BT50-AD	6	21	27	100	36	S005014C
122-02-502	BT50-SFX06-120	BT50-AD	6	21	27	120	36	S005014C
122-02-503	BT50-SFX06-160	BT50-AD	6	21	32	160	36	S005014C
122-02-504	BT50-SF08-100	BT50-AD	8	21	27	100	36	S006014C
122-02-505	BT50-SF08-120	BT50-AD	8	21	27	120	36	S006014C
122-02-506	BT50-SF08-160	BT50-AD	8	21	32	160	36	S006014C
122-02-507	BT50-SF10-100	BT50-AD	10	24	32	100	42	S008014C
122-02-508	BT50-SF10-120	BT50-AD	10	24	32	120	42	S008014C
122-02-509	BT50-SF10-160	BT50-AD	10	24	34	160	42	S008014C
122-02-510	BT50-SF12-100	BT50-AD	12	24	32	100	47	S008014C
122-02-511	BT50-SF12-120	BT50-AD	12	24	32	120	47	S008014C
122-02-512	BT50-SF12-160	BT50-AD	12	24	34	160	47	S008014C
122-02-513	BT50-SF14-100	BT50-AD	14	27	34	100	47	S008014C
122-02-514	BT50-SF14-120	BT50-AD	14	27	34	120	47	S008014C
122-02-515	BT50-SF14-160	BT50-AD	14	27	42	160	47	S008014C
122-02-516	BT50-SF16-100	BT50-AD	16	27	34	100	50	S012014C
122-02-517	BT50-SF16-120	BT50-AD	16	27	34	120	50	S012014C
122-02-518	BT50-SF16-160	BT50-AD	16	27	42	160	50	S012014C
122-02-519	BT50-SF18-100	BT50-AD	18	33	42	100	50	S012014C
122-02-520	BT50-SF18-120	BT50-AD	18	33	42	120	50	S012014C
122-02-521	BT50-SF18-160	BT50-AD	18	33	51	160	50	S012014C
122-02-522	BT50-SF20-100	BT50-AD	20	33	42	100	52	S016016C
122-02-523	BT50-SF20-120	BT50-AD	20	33	42	120	52	S016016C
122-02-524	BT50-SF20-160	BT50-AD	20	33	51	160	52	S016016C
122-02-525	BT50-SF25-110	BT50-AD	25	44	53	110	58	S016016C
122-02-526	BT50-SF25-135	BT50-AD	25	44	60	135	58	S016016C
122-02-527	BT50-SF25-160	BT50-AD	25	44	60	160	58	S016016C
122-02-528	BT50-SF32-110	BT50-AD	32	44	53	110	58	S016016C
122-02-529	BT50-SF32-135	BT50-AD	32	44	60	135	58	S016016C
122-02-530	BT50-SF32-160	BT50-AD	32	44	60	160	58	S016016C

ER COLLET CHUCK

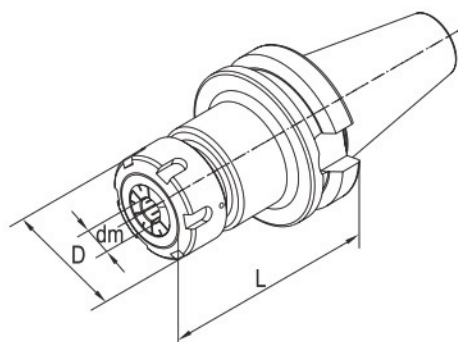
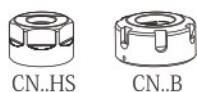
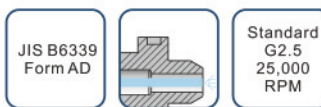
- Radial run-out less than 0.01mm.
- Constructed of alloy steel for long, durable service life.
- For clamping tools with plain shank in collets to DIN6499.
- Supplied with high performance clamping nut.



Order No.	Model	Shank	Size(mm)			Nuts	Screw	For Collets	Wrench
			dm	D	L				
122-04-301	BT30-ER11-60	BT30-AD	0.5-7	19	60	CN11HS	SER11C	ER11	W17D
122-04-302	BT30-ER11-90	BT30-AD	0.5-7	19	90	CN11HS	SER11C	ER11	W17D
122-04-303	BT30-ER16-60	BT30-AD	0.5-10	28	60	CN16HS	SER16C	ER16	W25D
122-04-304	BT30-ER16-90	BT30-AD	0.5-10	28	90	CN16HS	SER16C	ER16	W25D
122-04-305	BT30-ER16-120	BT30-AD	0.5-10	28	120	CN16HS	SER16C	ER16	W25D
122-04-306	BT30-ER20-60	BT30-AD	1.0-13	34	60	CN20HS	SER20C	ER20	W30D
122-04-307	BT30-ER20-90	BT30-AD	1.0-13	34	90	CN20HS	SER20C	ER20	W30D
122-04-308	BT30-ER20-120	BT30-AD	1.0-13	34	120	CN20HS	SER20C	ER20	W30D
122-04-309	BT30-ER25-60	BT30-AD	1.0-16	42	60	CN25B	SER25C	ER25	YER25B
122-04-310	BT30-ER25-90	BT30-AD	1.0-16	42	90	CN25B	SER25C	ER25	YER25B
122-04-311	BT30-ER25-120	BT30-AD	1.0-16	42	120	CN25B	SER25C	ER25	YER25B
122-04-312	BT30-ER32-60	BT30-AD	2.0-20	50	60	CN32B	SER32C	ER32	YER32B
122-04-313	BT30-ER32-90	BT30-AD	2.0-20	50	90	CN32B	SER32C	ER32	YER32B
122-04-401	BT40-ER11-70	BT40-AD	0.5-7	19	70	CN11HS	SER11C	ER11	W17D
122-04-402	BT40-ER11-120	BT40-AD	0.5-7	19	120	CN11HS	SER11C	ER11	W17D
122-04-403	BT40-ER16-70	BT40-AD	0.5-10	28	70	CN16HS	SER16C	ER16	W25D
122-04-404	BT40-ER16-100	BT40-AD	0.5-10	28	100	CN16HS	SER16C	ER16	W25D
122-04-405	BT40-ER16-120	BT40-AD	0.5-10	28	120	CN16HS	SER16C	ER16	W25D
122-04-406	BT40-ER16-150	BT40-AD	0.5-10	28	150	CN16HS	SER16C	ER16	W25D
122-04-407	BT40-ER20-80	BT40-AD	1.0-13	34	80	CN20HS	SER20C	ER20	W30D
122-04-408	BT40-ER20-100	BT40-AD	1.0-13	34	100	CN20HS	SER20C	ER20	W30D
122-04-409	BT40-ER20-120	BT40-AD	1.0-13	34	120	CN20HS	SER20C	ER20	W30D
122-04-410	BT40-ER20-150	BT40-AD	1.0-13	34	150	CN20HS	SER20C	ER20	W30D
122-04-411	BT40-ER25-80	BT40-AD	1.0-16	42	80	CN25B	SER25C	ER25	YER25B
122-04-412	BT40-ER25-100	BT40-AD	1.0-16	42	100	CN25B	SER25C	ER25	YER25B
122-04-413	BT40-ER25-120	BT40-AD	1.0-16	42	120	CN25B	SER25C	ER25	YER25B
122-04-414	BT40-ER25-150	BT40-AD	1.0-16	42	150	CN25B	SER25C	ER25	YER25B
122-04-415	BT40-ER32-60	BT40-AD	2.0-20	50	60	CN32B	SER32C	ER32	YER32B
122-04-416	BT40-ER32-80	BT40-AD	2.0-20	50	80	CN32B	SER32C	ER32	YER32B
122-04-417	BT40-ER32-100	BT40-AD	2.0-20	50	100	CN32B	SER32C	ER32	YER32B
122-04-418	BT40-ER32-120	BT40-AD	2.0-20	50	120	CN32B	SER32C	ER32	YER32B
122-04-419	BT40-ER32-150	BT40-AD	2.0-20	50	150	CN32B	SER32C	ER32	YER32B
122-04-420	BT40-ER40-80	BT40-AD	3.0-26	63	80	CN40B	SER40C	ER40	YER40B
122-04-421	BT40-ER40-100	BT40-AD	3.0-26	63	100	CN40B	SER40C	ER40	YER40B
122-04-422	BT40-ER40-120	BT40-AD	3.0-26	63	120	CN40B	SER40C	ER40	YER40B
122-04-423	BT40-ER40-150	BT40-AD	3.0-26	63	150	CN40B	SER40C	ER40	YER40B

ER COLLET CHUCK

- Radial run-out less than 0.01mm.
- Constructed of alloy steel for long, durable service life.
- For clamping tools with plain shank in collets to DIN6499.
- Supplied with high performance clamping nut.



Order No.	Model	Shank	Size(mm)			Nuts	Screw	For Collets	Wrench
			dm	D	L				
122-04-501	BT50-ER16-80	BT50-AD	0.5-10	28	80	CN16HS	SER16C	ER16	W25D
122-04-502	BT50-ER16-100	BT50-AD	0.5-10	28	100	CN16HS	SER16C	ER16	W25D
122-04-503	BT50-ER16-120	BT50-AD	0.5-10	28	120	CN16HS	SER16C	ER16	W25D
122-04-504	BT50-ER16-165	BT50-AD	0.5-10	28	165	CN16HS	SER16C	ER16	W25D
122-04-505	BT50-ER20-80	BT50-AD	1.0-13	34	80	CN20HS	SER20C	ER20	W30D
122-04-506	BT50-ER20-100	BT50-AD	1.0-13	34	100	CN20HS	SER20C	ER20	W30D
122-04-507	BT50-ER20-120	BT50-AD	1.0-13	34	120	CN20HS	SER20C	ER20	W30D
122-04-508	BT50-ER20-135	BT50-AD	1.0-13	34	135	CN20HS	SER20C	ER20	W30D
122-04-509	BT50-ER20-165	BT50-AD	1.0-13	34	165	CN20HS	SER20C	ER20	W30D
122-04-510	BT50-ER25-80	BT50-AD	1.0-16	42	80	CN25B	SER25C	ER25	YER25B
122-04-511	BT50-ER25-100	BT50-AD	1.0-16	42	100	CN25B	SER25C	ER25	YER25B
122-04-512	BT50-ER25-120	BT50-AD	1.0-16	42	120	CN25B	SER25C	ER25	YER25B
122-04-513	BT50-ER25-165	BT50-AD	1.0-16	42	165	CN25B	SER25C	ER25	YER25B
122-04-514	BT50-ER32-90	BT50-AD	2.0-20	50	90	CN32B	SER32C	ER32	YER32B
122-04-515	BT50-ER32-100	BT50-AD	2.0-20	50	100	CN32B	SER32C	ER32	YER32B
122-04-516	BT50-ER32-120	BT50-AD	2.0-20	50	120	CN32B	SER32C	ER32	YER32B
122-04-517	BT50-ER32-165	BT50-AD	2.0-20	50	165	CN32B	SER32C	ER32	YER32B
122-04-518	BT50-ER32-200	BT50-AD	2.0-20	50	200	CN32B	SER32C	ER32	YER32B
122-04-519	BT50-ER32-250	BT50-AD	2.0-20	50	250	CN32B	SER32C	ER32	YER32B
122-04-520	BT50-ER40-100	BT50-AD	3.0-26	63	100	CN40B	SER40C	ER40	YER40B
122-04-521	BT50-ER40-120	BT50-AD	3.0-26	63	120	CN40B	SER40C	ER40	YER40B
122-04-522	BT50-ER40-165	BT50-AD	3.0-26	63	165	CN40B	SER40C	ER40	YER40B
122-04-523	BT50-ER40-200	BT50-AD	3.0-26	63	200	CN40B	SER40C	ER40	YER40B

ER COLLET CHUCK & COLLET SET

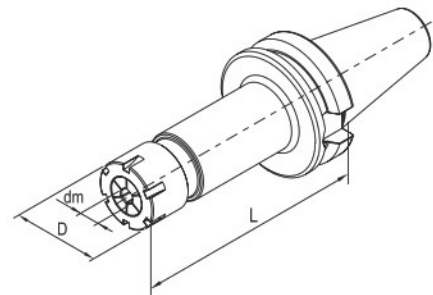
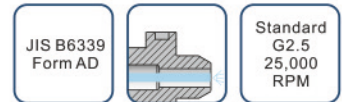
- Each set including 1pc of BT40-AD ER collet chuck and 9pc of ER collets,
- Equipped with ER collet nut wrench and pack in strong aluminium box.
- Long working life time due to system radial run-out less than 0.01mm.



Order No.	Shank Model	Collet	Wrench
122-04-S41	BT40-ER16-70	ER16: dia.2-3-4-5-6-7-8-9-10mm	W25D
122-04-S42	BT40-ER25-80	ER25: dia.3-4-5-6-8-10-12-14-16mm	YER25B
122-04-S43	BT40-ER32-60	ER32: dia.4-6-8-10-12-14-16-18-20mm	YER32B

ER SLIM COLLET CHUCK

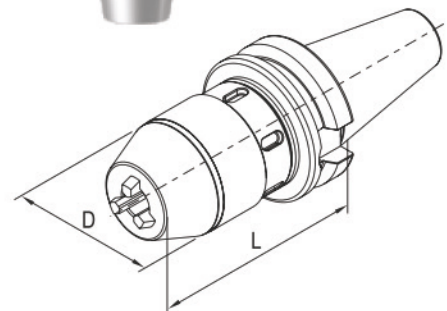
- For clamping tools with plain shank in collets to DIN6499.
- Supplied with fine balanced mini clamping nut for high speed.



Order No.	Model	Shank	Size(mm)			Nuts	Screw	For Collets	Wrench
			dm	D	L				
122-04-314	BT30-ER11-60(M)	BT30-AD	0.5-7	16	60	CNM11	SER11C	ER11	WM11
122-04-315	BT30-ER11-90(M)	BT30-AD	0.5-7	16	90	CNM11	SER11C	ER11	WM11
122-04-316	BT30-ER11-120(M)	BT30-AD	0.5-7	16	120	CNM11	SER11C	ER11	WM11
122-04-317	BT30-ER16-60(M)	BT30-AD	0.5-10	23	60	CNM16	SER16C	ER16	WM16
122-04-318	BT30-ER16-90(M)	BT30-AD	0.5-10	23	90	CNM16	SER16C	ER16	WM16
122-04-319	BT30-ER16-120(M)	BT30-AD	0.5-10	23	120	CNM16	SER16C	ER16	WM16
122-04-320	BT30-ER20-60(M)	BT30-AD	1.0-13	28	60	CNM20	SER20C	ER20	WM20
122-04-321	BT30-ER20-90(M)	BT30-AD	1.0-13	28	90	CNM20	SER20C	ER20	WM20
122-04-322	BT30-ER20-120(M)	BT30-AD	1.0-13	28	120	CNM20	SER20C	ER20	WM20
122-04-424	BT40-ER11-90(M)	BT40-AD	0.5-7	16	90	CNM11	SER11C	ER11	WM11
122-04-425	BT40-ER11-120(M)	BT40-AD	0.5-7	16	120	CNM11	SER11C	ER11	WM11
122-04-426	BT40-ER11-150(M)	BT40-AD	0.5-7	16	150	CNM11	SER11C	ER11	WM11
122-04-427	BT40-ER16-90(M)	BT40-AD	0.5-10	23	90	CNM16	SER16C	ER16	WM16
122-04-428	BT40-ER16-120(M)	BT40-AD	0.5-10	23	120	CNM16	SER16C	ER16	WM16
122-04-429	BT40-ER16-150(M)	BT40-AD	0.5-10	23	150	CNM16	SER16C	ER16	WM16
122-04-430	BT40-ER20-95(M)	BT40-AD	1.0-13	28	95	CNM20	SER20C	ER20	WM20
122-04-431	BT40-ER20-120(M)	BT40-AD	1.0-13	28	120	CNM20	SER20C	ER20	WM20
122-04-432	BT40-ER20-150(M)	BT40-AD	1.0-13	28	150	CNM20	SER20C	ER20	WM20
122-04-524	BT50-ER16-105(M)	BT50-AD	0.5-10	23	105	CNM16	SER16C	ER16	WM16
122-04-525	BT50-ER16-135(M)	BT50-AD	0.5-10	23	135	CNM16	SER16C	ER16	WM16
122-04-526	BT50-ER16-165(M)	BT50-AD	0.5-10	23	165	CNM16	SER16C	ER16	WM16
122-04-527	BT50-ER20-105(M)	BT50-AD	1.0-13	28	105	CNM20	SER20C	ER20	WM20
122-04-528	BT50-ER20-135(M)	BT50-AD	1.0-13	28	135	CNM20	SER20C	ER20	WM20
122-04-529	BT50-ER20-165(M)	BT50-AD	1.0-13	28	165	CNM20	SER20C	ER20	WM20

INTEGRAL DRILL CHUCK HOLDER

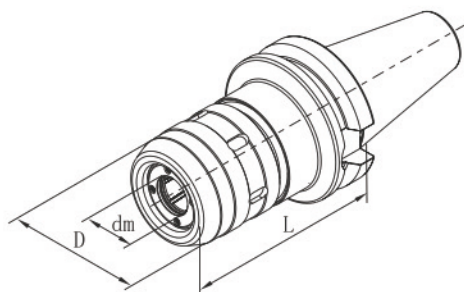
- Radial run-out less than 0.05mm.
- Wrench-Lock chucks incorporate wrench groove for additional tightening force.
- Integral shank design provides for greater accuracy and safety.
- Wrench included.



Order No.	Model	Shank	Capacity	Size(mm)		Wrench
				D	L	
122-12-301	BT30-KPU08-80	BT30-AD	0.5-8	37.5	80	WCN20
122-12-302	BT30-KPU13-110	BT30-AD	1.0-13	50.5	110	WCN32
122-12-401	BT40-KPU08-80	BT40-AD	0.5-8	37.5	80	WCN20
122-12-402	BT40-KPU13-95	BT40-AD	1.0-13	50.5	95	WCN32
122-12-403	BT40-KPU16-100	BT40-AD	3-16	57	100	WCN32
122-12-501	BT50-KPU13-105	BT50-AD	1.0-13	50.5	105	WCN32
122-12-502	BT50-KPU16-110	BT50-AD	3-16	57	110	WCN32

POWER MILLING CHUCK

- Very high clamping force and High stability improving surface quality and tool life time.
- Optimised design resulting in Ideal damping characteristics and low vibration.
- Radial run-out less than 0.01mm.
- For clamping cutting tools with cylindric shank tolerance h6
- Flexible clamping range by using reducing sleeve for various tool shank.



Order No.	Model	Shank	Size(mm)			For Collets	Wrench
			dm	D	L		
122-03-301	BT30-C20-95	BT30-AD	20	55	95	C20	WC20
122-03-401	BT40-C20-95	BT40-AD	20	55	95	C20	WC20
122-03-402	BT40-C20-120	BT40-AD	20	55	120	C20	WC20
122-03-403	BT40-C25-100	BT40-AD	25	62	100	C25	WC25
122-03-404	BT40-C25-120	BT40-AD	25	62	120	C25	WC25
122-03-405	BT40-C32-105	BT40-AD	32	72	105	C32	WC32
122-03-501	BT50-C20-105	BT50AD	20	55	105	C20	WC20
122-03-502	BT50-C20-135	BT50AD	20	55	135	C20	WC20
122-03-503	BT50-C25-110	BT50AD	25	62	110	C25	WC25
122-03-504	BT50-C25-135	BT50AD	25	62	135	C25	WC25
122-03-505	BT50-C32-110	BT50AD	32	72	110	C32	WC32
122-03-506	BT50-C32-135	BT50AD	32	72	135	C32	WC32
122-03-507	BT50-C42-110	BT50AD	42	87	110	C42	WC42

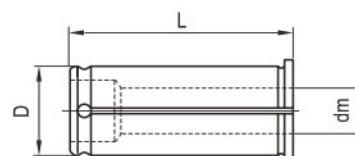
POWER MILLING CHUCK SET

- Each set including 1pc of power milling chuck and 6pc of reducing sleeve, Equipped with wrench and pack in strong aluminium box.
- Long working life time due to system radial run-out less than 0.01mm.



REDUCING SLEEVE FOR POWER MILLING CHUCK

- For drill, milling, reaming.
- Radial run-out less than 0.01mm.
- For clamping cutting tools with cylindric shank tolerance h6.



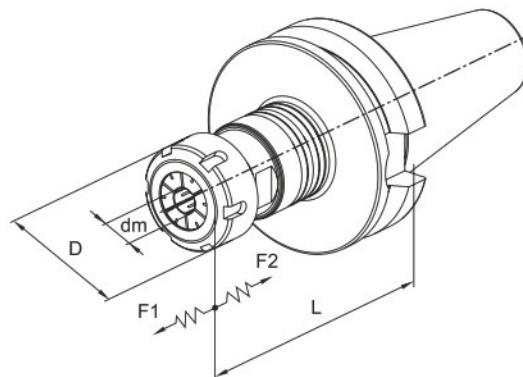
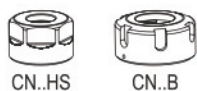
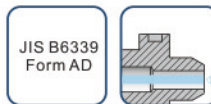
Order No.	Modle	Size (mm)		
		dm	D	L
100-03-001	C20-3	3	20	55
100-03-002	C20-4	4	20	55
100-03-003	C20-5	5	20	55
100-03-004	C20-6	6	20	55
100-03-005	C20-8	8	20	55
100-03-006	C20-10	10	20	55
100-03-007	C20-12	12	20	55
100-03-008	C20-14	14	20	55
100-03-009	C20-16	16	20	55
100-03-010	C25-4	4	25	60
100-03-011	C25-5	5	25	60
100-03-012	C25-6	6	25	60
100-03-013	C25-8	8	25	60
100-03-014	C25-10	10	25	60
100-03-015	C25-12	12	25	60
100-03-016	C25-14	14	25	60
100-03-017	C25-16	16	25	60
100-03-018	C25-18	18	25	60
100-03-019	C25-20	20	25	60

Order No.	Modle	Size (mm)		
		dm	D	L
100-03-020	C32-6	6	32	65
100-03-021	C32-8	8	32	65
100-03-022	C32-10	10	32	65
100-03-023	C32-12	12	32	65
100-03-024	C32-14	14	32	65
100-03-025	C32-16	16	32	65
100-03-026	C32-18	18	32	65
100-03-027	C32-20	20	32	65
100-03-028	C32-25	25	32	65
100-03-029	C42-6	6	42	70
100-03-030	C42-8	8	42	70
100-03-031	C42-10	10	42	70
100-03-032	C42-12	12	42	70
100-03-033	C42-14	14	42	70
100-03-034	C42-16	16	42	70
100-03-035	C42-18	18	42	70
100-03-036	C42-20	20	42	70
100-03-037	C42-25	25	42	70
100-03-038	C42-32	32	42	70

Order No.	content		
	1pc chuck	1pc each size of reducing sleeve	1pc wrench
111-03-S04	BT40-C32-105	C32-8,C32-10,C32-12,C32-16,C32-20,C32-25 (internal dia:8,10,12,16,20,25mm)	WC32
111-03-S05	BT50-C32-110	C32-8,C32-10,C32-12,C32-16,C32-20,C32-25 (internal dia:8,10,12,16,20,25mm)	WC32

AUTOMATIC MICRO-COMPENSATION TAPPING CHUCK

- Compensation capacity $\pm 0.5\text{mm}$.
- Precision producing true thread with quality surface.
- Improving effectiveness and tap life time.
- For NC machines and machining center.
- For right hand and left hand thread.

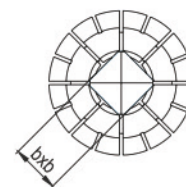
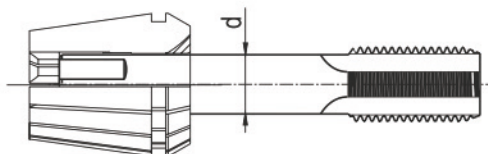


Order No.	Model	SHANK	capacity	Size(mm)					Nuts	for Collets
				D	dm	L	F1	F2		
122-13-301	BT30-V20-80	BT30-AD	M4-M12(No.8-7/16)	34	3-10	80	0.5	0.5	CN20HS	ER20..
122-13-401	BT40-V20-85	BT40-AD	M4-M12(No.8-7/16)	34	3-10	85	0.5	0.5	CN20HS	ER20..
122-13-501	BT50-V20-100	BT50-AD	M4-M12(No.8-7/16)	34	3-10	100	0.5	0.5	CN20HS	ER20..
122-13-402	BT40-V32-100	BT40-AD	M4-M20(No.8-3/4)	50	3-16	100	0.5	0.5	CN32B	ER32..
122-13-502	BT50-V32-115	BT50-AD	M4-M20(No.8-3/4)	50	3-16	115	0.5	0.5	CN32B	ER32..

Optional accessories:	V20	V32
Coolant Nuts	CN20C	CN32C
Sealing Disk	DER20C	DER32C
Wrench for Nut	W30D	YER32B
Wrench for fixing	W24D	W36D

ER TAP COLLET

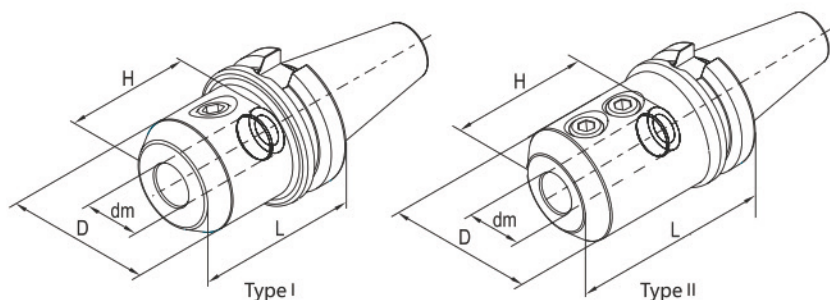
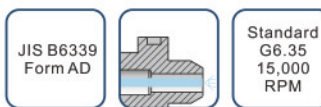
- Special design with internal square drive for machine taps.



Order No.	Modle	For taps				
		Shank d(mm)	Square b(mm)	ISO529/ISO2283	DIN374/DIN376	JISB4430
100-13-201	ER20-6.3B5	6.3	5	M8	M8	M6/M8
100-13-202	ER20-7B5.5	7	5.5	-	M10	M10
100-13-203	ER20-8B6.3	8	6.3	M10	-	-
100-13-204	ER20-8.5B6.5	8.5	6.5	-	-	M12
100-13-205	ER20-9B7.1	9	7.1	M12	M12	-
100-13-301	ER32-6.3B5	6.3	5	M8	M8	M6/M8
100-13-302	ER32-7B5.5	7	5.5	-	M10	M10
100-13-303	ER32-8B6.3	8	6.3	M10	-	-
100-13-304	ER32-8.5B6.5	8.5	6.5	-	-	M12
100-13-305	ER32-9B7.1	9	7.1	M12	M12	-
100-13-306	ER32-12B9	12	9	-	M16	-
100-13-307	ER32-12.5B10	12.5	10	M16	-	M16
100-13-308	ER32-14B11.2	14	11.2	M18/M20	M18	M18
100-13-309	ER32-15B12	15	12	-	-	M20
100-13-310	ER32-16B12	16	12	-	M20	-

SIDE LOCK HOLDER

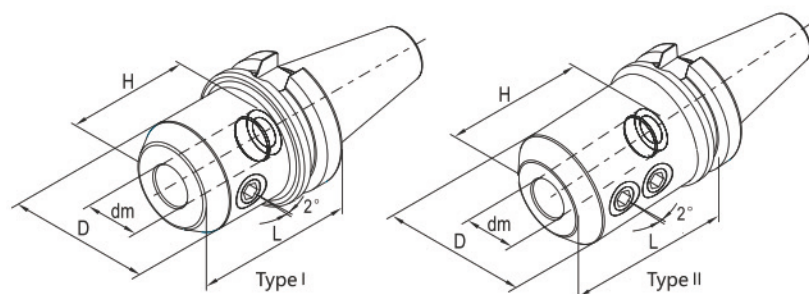
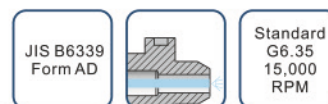
• For clamping tools with weldon shank to DIN1835 form B and DIN6535 form HB.



Order No.	Model	Shank	Size(mm)				Screw	Type
			dm	D	L	H		
122-05-301	BT30-XP16-63	BT30-AD	16	48	63	52	SXP16	I
122-05-302	BT30-XP20-70	BT30-AD	20	50	70	54	SXP20	I
122-05-401	BT40-XP16-63	BT40-AD	16	48	63	52	SXP16	I
122-05-402	BT40-XP20-70	BT40-AD	20	50	70	54	SXP20	I
122-05-403	BT40-XP25-90	BT40-AD	25	60	90	66	SXP25	II
122-05-404	BT40-XP32-100	BT40-AD	32	68	100	70	SXP32	II
122-05-501	BT50-XP16-80	BT50-AD	16	48	80	52	SXP16	I
122-05-502	BT50-XP20-80	BT50-AD	20	50	80	54	SXP20	I
122-05-503	BT50-XP25-100	BT50-AD	25	60	100	66	SXP25	II
122-05-504	BT50-XP32-105	BT50-AD	32	68	105	70	SXP32	II
122-05-505	BT50-XP40-120	BT50-AD	40	84	120	80	SXP32	II

2° SIDE LOCK HOLDER

• For clamping tools with parallel shank and inclined clamping flat(2°)
DIN1835 form E and DIN6535 form HE.

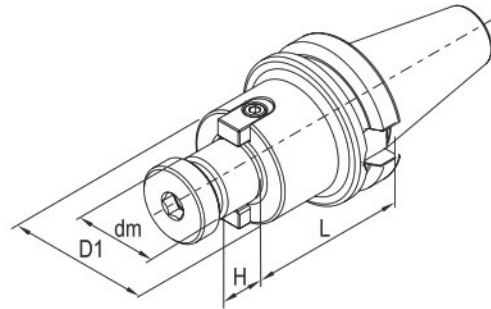


Order No.	Model	Shank	Size(mm)				Screw	Screw	Type
			dm	D	L	H			
122-05-303	BT30-XPD16-63	BT30-AD	16	45	63	52	SXP16	S012014C	I
122-05-304	BT30-XPD20-75	BT30-AD	20	52	75	54	SXP20	S016016C	I
122-05-305	BT30-XPD25-85	BT30-AD	25	65	85	59	SXP25	S020016C	II
122-05-405	BT40-XPD16-75	BT40-AD	16	48	75	52	SXP16	S012014C	I
122-05-406	BT40-XPD20-75	BT40-AD	20	52	75	54	SXP20	S016016C	I
122-05-407	BT40-XPD25-90	BT40-AD	25	65	90	59	SXP25	S020016C	II
122-05-408	BT40-XPD25-165	BT40-AD	25	65	165	59	SXP25	S020016C	II
122-05-409	BT40-XPD32-105	BT40-AD	32	72	105	63	SXP32	S020016C	II
122-05-410	BT40-XPD32-165	BT40-AD	32	72	165	63	SXP32	S020016C	II
122-05-506	BT50-XPD16-80	BT50-AD	16	48	80	52	SXP16	S012014C	I
122-05-507	BT50-XPD20-80	BT50-AD	20	52	80	54	SXP20	S016016C	I
122-05-508	BT50-XPD25-100	BT50-AD	25	65	100	59	SXP25	S020016C	II
122-05-509	BT50-XPD25-165	BT50-AD	25	65	165	59	SXP25	S020016C	II
122-05-510	BT50-XPD32-105	BT50-AD	32	72	105	63	SXP32	S020016C	II
122-05-511	BT50-XPD32-165	BT50-AD	32	72	165	63	SXP32	S020016C	II

SHELL END MILL ARBOR

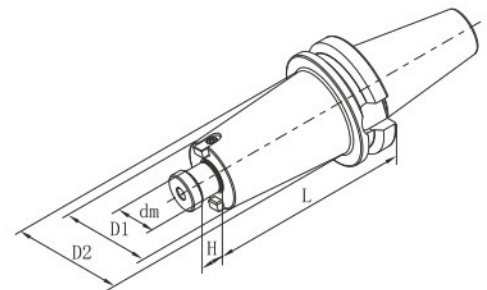
• For clamping shell end mill and milling cutter.

JIS B6339 Form A	Standard G6.3 15,000 RPM
---------------------	-----------------------------------



Order No.	Model	Shank	Size(mm)				Screw	Key	Screw
			dm	D1	L	H			
121-07-301	BT30-XMB16-60	BT30-A	16	34	60	17	MS08030	JC08017	MS03008
121-07-302	BT30-XMB22-45	BT30-A	22	42	45	19	MS10030	JC10021	MS04010
121-07-303	BT30-XMB27-45	BT30-A	27	60	45	21	SXM27	JC12023	MS05016
121-07-401	BT40-XMB16-60	BT40-A	16	34	60	17	MS08030	JC08017	MS03008
121-07-402	BT40-XMB16-90	BT40-A	16	34	90	17	MS08030	JC08017	MS03008
121-07-403	BT40-XMB16-120	BT40-A	16	34	120	17	MS08030	JC08017	MS03008
121-07-404	BT40-XMB22-60	BT40-A	22	42	60	19	MS10030	JC10021	MS04010
121-07-405	BT40-XMB22-90	BT40-A	22	42	90	19	MS10030	JC10021	MS04010
121-07-406	BT40-XMB22-120	BT40-A	22	42	120	19	MS10030	JC10021	MS04010
121-07-407	BT40-XMB27-60	BT40-A	27	60	60	21	SXM27	JC12023	MS05016
121-07-408	BT40-XMB27-90	BT40-A	27	60	90	21	SXM27	JC12023	MS05016
121-07-409	BT40-XMB27-120	BT40-A	27	60	120	21	SXM27	JC12023	MS05016
121-07-410	BT40-XMB32-60	BT40-A	32	78	60	24	SXM32	JC14020	MS06020
121-07-411	BT40-XMB40-60	BT40-A	40	89	60	27	SXM40	KXM40	MS08020

Order No.	Model	Shank	Size(mm)					Screw	Key	Screw
			dm	D1	D2	L	H			
121-07-501	BT50-XMB16-60	BT50-A	16	34	-	60	17	MS08030	JC08017	MS03008
121-07-502	BT50-XMB16-90	BT50-A	16	34	-	90	17	MS08030	JC08017	MS03008
121-07-503	BT50-XMB16-120	BT50-A	16	34	-	120	17	MS08030	JC08017	MS03008
121-07-504	BT50-XMB22-60	BT50-A	22	42	-	60	19	MS10030	JC10021	MS04010
121-07-505	BT50-XMB22-90	BT50-A	22	42	-	90	19	MS10030	JC10021	MS04010
121-07-506	BT50-XMB22-120	BT50-A	22	42	-	120	19	MS10030	JC10021	MS04010
121-07-507	BT50-XMB22-150	BT50-A	22	42	60	150	19	MS10030	JC10021	MS04010
121-07-508	BT50-XMB22-200	BT50-A	22	42	60	220	19	MS10030	JC10021	MS04010
121-07-509	BT50-XMB22-250	BT50-A	22	42	60	250	19	MS10030	JC10021	MS04010
121-07-510	BT50-XMB27-60	BT50-A	27	60	-	60	21	SXM27	JC12023	MS05016
121-07-511	BT50-XMB27-90	BT50-A	27	60	-	90	21	SXM27	JC12023	MS05016
121-07-512	BT50-XMB27-120	BT50-A	27	60	-	120	21	SXM27	JC12023	MS05016
121-07-513	BT50-XMB27-150	BT50-A	27	60	75	150	21	SXM27	JC12023	MS05016
121-07-514	BT50-XMB27-200	BT50-A	27	60	75	200	21	SXM27	JC12023	MS05016
121-07-515	BT50-XMB27-250	BT50-A	27	60	75	250	21	SXM27	JC12023	MS05016
121-07-516	BT50-XMB27-300	BT50-A	27	60	75	300	21	SXM27	JC12023	MS05016
121-07-517	BT50-XMB32-60	BT50-A	32	78	-	60	24	SXM32	JC14020	MS06020
121-07-518	BT50-XMB32-90	BT50-A	32	78	-	90	24	SXM32	JC14020	MS06020
121-07-519	BT50-XMB32-120	BT50-A	32	78	-	120	24	SXM32	JC14020	MS06020
121-07-520	BT50-XMB32-150	BT50-A	32	78	-	150	24	SXM32	JC14020	MS06020
121-07-521	BT50-XMB32-200	BT50-A	32	78	-	200	24	SXM32	JC14020	MS06020
121-07-522	BT50-XMB40-60	BT50-A	40	89	-	60	27	SXM40	KXM40	MS08020
121-07-523	BT50-XMB40-90	BT50-A	40	89	-	90	27	SXM40	KXM40	MS08020
121-07-524	BT50-XMB40-120	BT50-A	40	89	-	120	27	SXM40	KXM40	MS08020
121-07-525	BT50-XMB40-150	BT50-A	40	89	-	150	27	SXM40	KXM40	MS08020

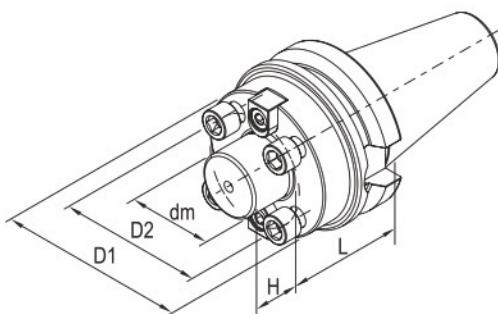


FACE MILLING CUTTER HOLDER

- For clamping face milling cutter with 4 holes.
- Increased collar contact surface.
- Suppled with lock screws.

JIS B6339
Form A

Standard
G6.3
8,000
RPM



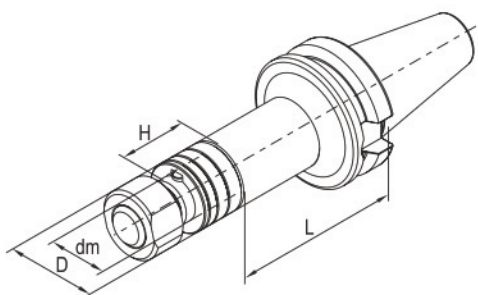
Order No.	Model	Shank	Size(mm)					Screw	Key	Screw
			dm	D1	D2	L	H			
121-09-401	BT40-XMC40-60	BT40-A	40	89	66.7	60	27	MS12045(4)	KXM40	MS08020
121-09-501	BT50-XMC40-75	BT50-A	40	89	66.7	75	27	MS12045(4)	KXM40	MS08020
121-09-502	BT50-XMC60-75	BT50-A	60	129	101.6	75	38	MS16045(4)	KXMC60	MS10025

SLOTING CUTTER HOLDER

- For clamping saws and side milling cutter.
- Furnished complete with assorted spacers, nut and key.

JIS B6339
Form A

Standard
G6.3
8,000
RPM



Order No.	Model	Shank	Size(mm)				Nuts	Spacer	Key
			dm	D	L	H			
121-10-401	BT40-XS22-75	BT40-A	22	34	75	30	MXS22	SD22	JA06020
121-10-402	BT40-XS22-120	BT40-A	22	34	120	30	MXS22	SD22	JA06020
121-10-403	BT40-XS27-75	BT40-A	27	40	75	30	MXS27	SD27	JA07022
121-10-404	BT40-XS27-120	BT40-A	27	40	120	30	MXS27	SD27	JA07022
121-10-405	BT40-XS32-90	BT40-A	32	46	90	30	MXS32	SD32	JA08022
121-10-501	BT50-XS22-90	BT50-A	22	34	90	30	MXS22	SD22	JA06020
121-10-502	BT50-XS22-135	BT50-A	22	34	135	30	MXS22	SD22	JA06020
121-10-503	BT50-XS27-90	BT50-A	27	40	90	30	MXS27	SD27	JA07022
121-10-504	BT50-XS27-135	BT50-A	27	40	135	30	MXS27	SD27	JA07022
121-10-505	BT50-XS32-90	BT50-A	32	46	90	30	MXS32	SD32	JA08022
121-10-506	BT50-XS32-135	BT50-A	32	46	135	30	MXS32	SD32	JA08022
121-10-507	BT50-XS40-90	BT50-A	40	55	90	30	MXS40	SD40	JA10025
121-10-508	BT50-XS40-135	BT50-A	40	55	135	30	MXS40	SD40	JA10025
121-10-509	BT50-XS50-90	BT50-A	50	69	90	30	MXS50	SD50	JA12025
121-10-510	BT50-XS50-135	BT50-A	50	69	135	30	MXS50	SD50	JA12025